



WILDFIRE IN THE EASTERN SIERRA

*Aligning community and
regional efforts*

AGENDA

County Coordinator position

Addressing wildfire in Inyo

Regional collaborations

Successes and challenges

INTENTION OF THE POSITION:

- Conduit for what's happening and how to get things done
- Subject-matter input (home hardening, defensible space, fuel breaks, project identification)
- Equity
- Align funding and projects with strategies and plans (not only wildfire-related)
- Investment: ~\$30k over 6 months → \$20k from CFSC; \$3k and outreach kit from CalOES/CFSC



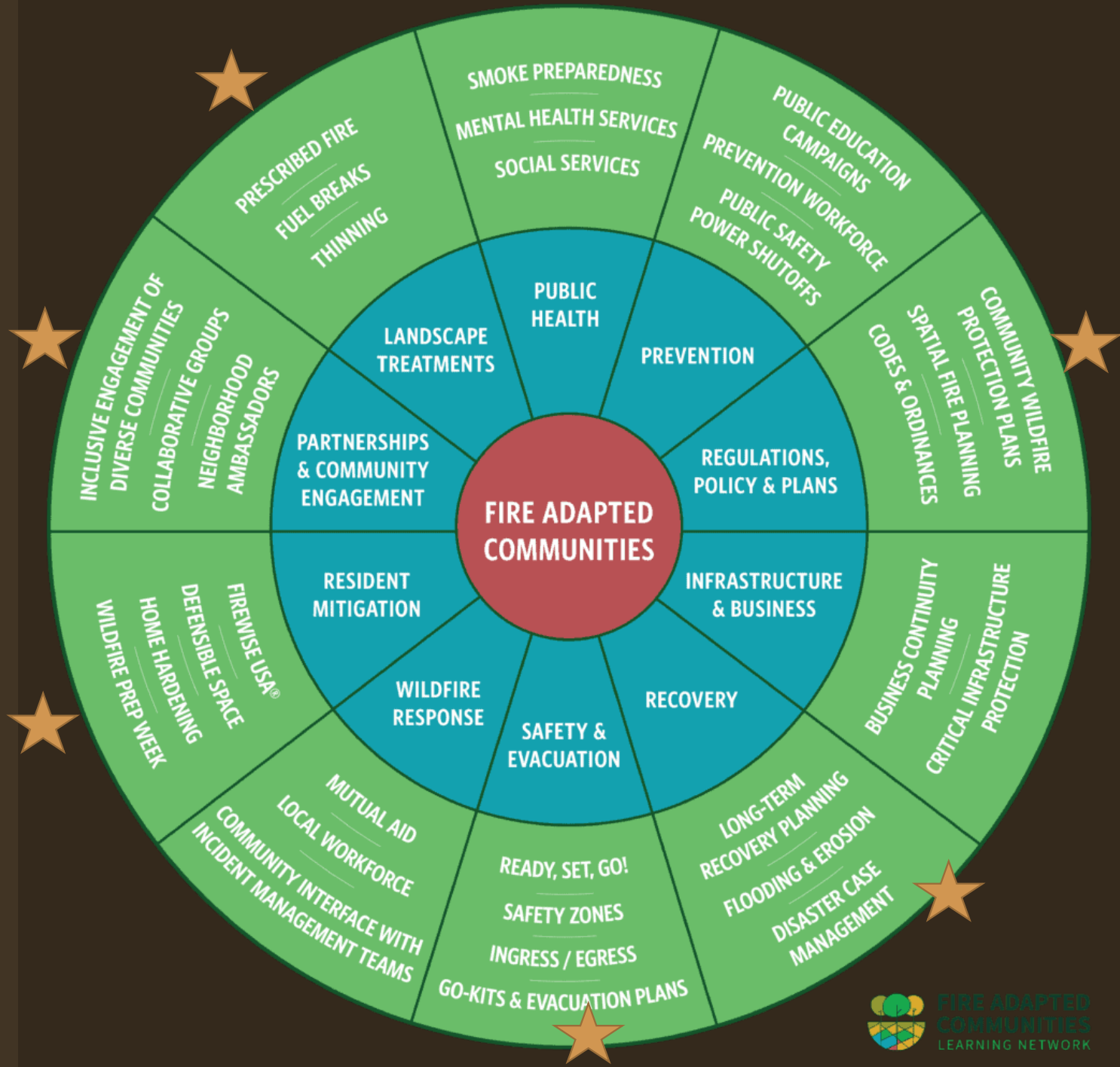
WILDFIRE RESILIENCE

*A multi-pronged approach
for cohesive planning and
implementation.*



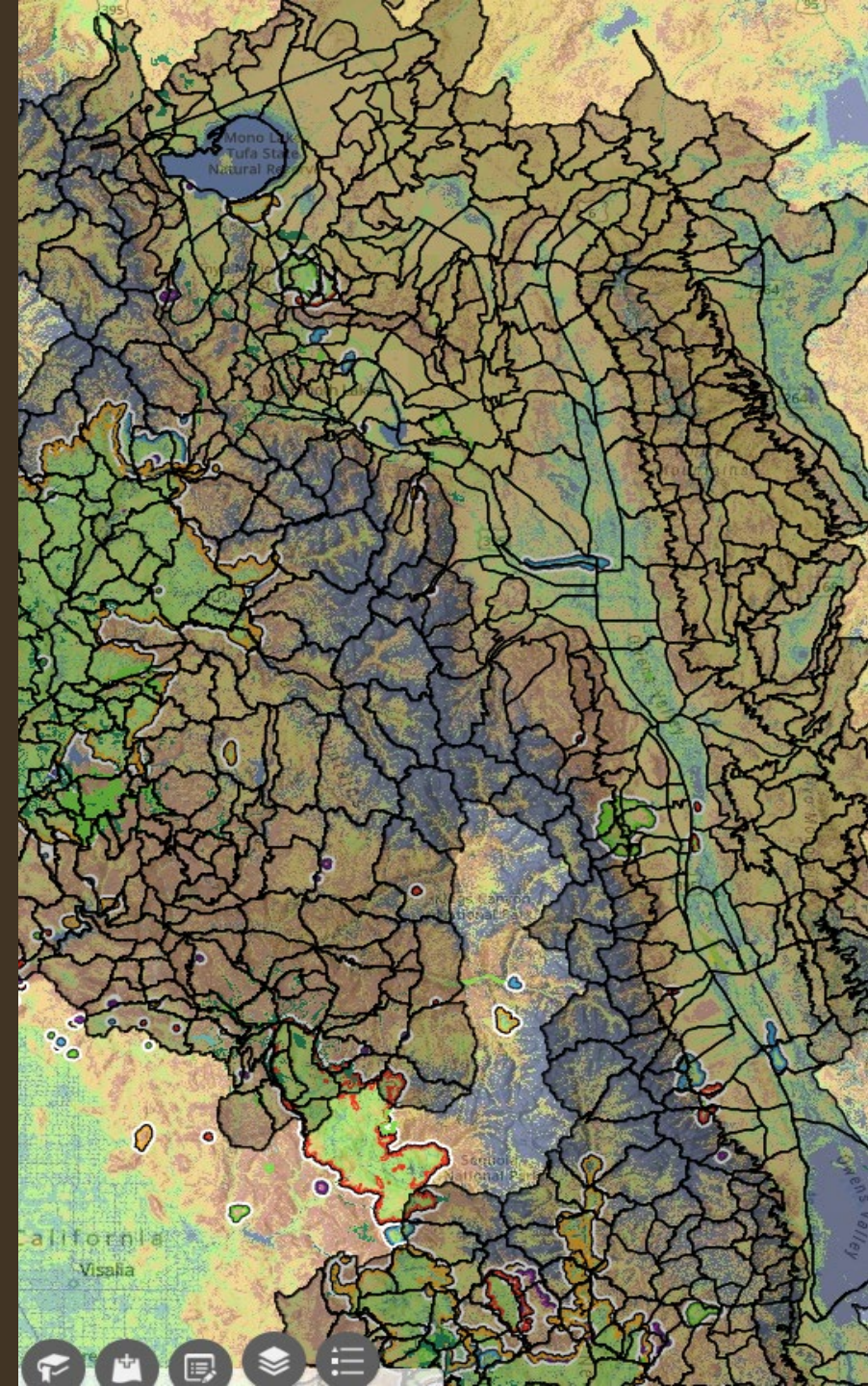
INYO HAPPENINGS

- CWPP – County (roadmap + engagement)
- CWPP – Independence/40 Acres
- LHMP
- County code updates
- Community events
- Ready Inyo website
- Emergency operations & planning
- Grants
- Partnerships



REGIONAL EFFORTS

- Mono County Coordinator
- Whitebark Institute
- Agency partners
- Inyo-Mono RCD
- Potential Operational Delineations (USFS)
- California Fire Safe Council
- Wildfire Task Force Regional Resource kits (metrics) + Planscape (decision support)
- Regional Forest and Fire Capacity Program



A FEW SUCCESSES

- Yana's workshop
- Community engagement (Granite View, Starlite)
- Collaborative planning
- 40 Acres and Independence CWPPs
- Partnerships

A FEW CHALLENGES -

largely I am finding that my job is to navigate & break through barriers to implementation, especially for our volunteer organizations

- Water
- Riparian solutions
- People and agencies are busy
- People and agencies use different platforms for data and communication
- Avenues for implementation and jurisdictional constraints

RESOURCES

- Planscape + toolkits

[Regional Resource Kits Page - California Wildfire & Forest Resilience \(wildfiretaskforce.org\)](#)

[Planscape](#)

When I first started, I read as many plans as I could find (there are so many!). One of those plans was the [California's Wildfire and Forest Resilience Action Plan: Recommendations of the Governor's Forest Management Task Force \(wildfiretaskforce.org\)](#) put forth by the CA Wildfire Task Force. This outlines the strategic priorities of the state and is where I found the elements to create fire adapted communities (starting on page 27). In concert, the Task Force created Regional Profiles and tool kits to better apply funding and resources to the different regions in a meaningful way. According to the [metrics](#) for our region and subregion, the top priority is to foster resilient and fire-safe communities. Within that, reducing fuel loads and making investments in home hardening and defensible space rose to the top of the "Extremely Important" list.

- PODs + [RMA](#) dashboard

[Potential Operational Delineations \(PODs\) | US Forest Service Research and Development \(usda.gov\)](#)

This [article](#) highlights an example of how PODs can be used for strategic pre-planning.

- FireAside (or similar app)

[Fire Aside - Software for Defensible Space, Home Hardening & Fuel Removal](#)

I didn't mention this, but there might be an opportunity to explore using something like FireAside, which could be used to increase capacity, bring awareness and education, and communicate how funding is translating to safer communities. I'm interested to know your thoughts.

- CWPP - Quickbase project mgmt. (coming soon) - My goal is to make this plan with a meaningful and accessible interface (dashboard and map included) to be used as a resource for education; engagement; and tracking and managing projects, resources, and funding.